

# Internal Certificate of Analysis



**COLORADO CHROMATOGRAPHY**  
INSPIRED BY NATURE DRIVEN BY SCIENCE

**Company Name:** Colorado Chromatography Labs  
**Address:** 10505 South Progress Way, Unit 105  
**Address Cont:** Parker, CO 80145  
**Website:** ColoradoChromatography.com  
**Email:** Info@ColoradoChromatography.com  
**Phone:** 303-856-3244

**Sample ID:** 09042021S1L4

**Matrix:** Acetonitrile

**Sample Type:** Distillate/Concentrate

**Sample Size:** 1000mg

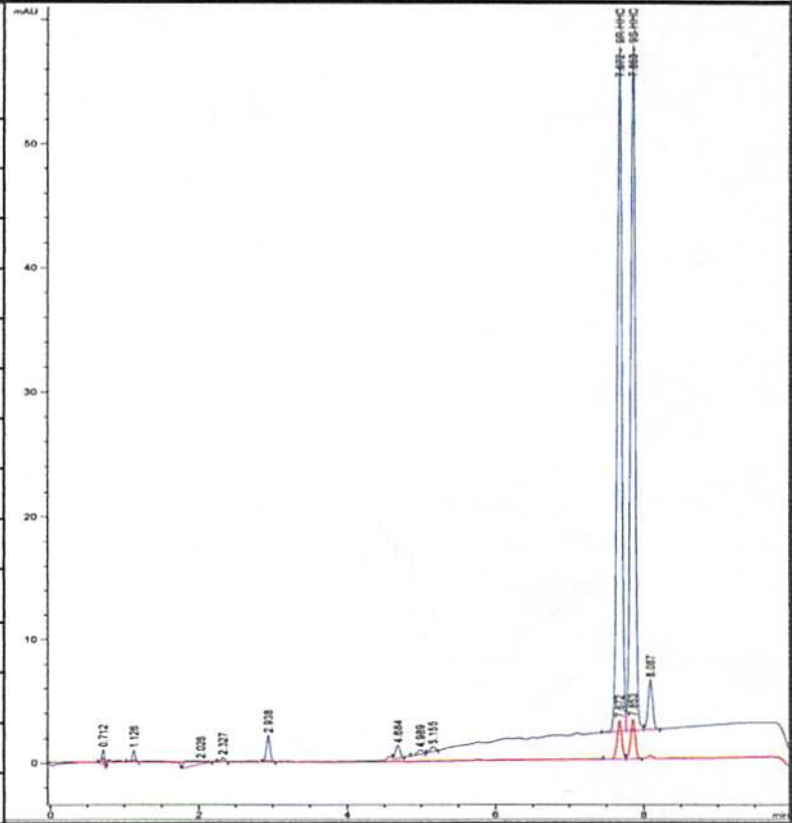
**Batch Number:** 4.8.2021-HHC

**Test Type:** Internal HPLC Analysis

**Method Name:** DAD High Throughput

**Date Tested:** 8/22/2021

Analyte Name	LOD %	Result %	Result mg/g
CBDV	0.009%	0.00%	0.0
CBDA	0.012%	0.00%	0.0
CBGA	0.015%	0.00%	0.0
CBG	0.008%	0.00%	0.0
CBD	0.006%	0.00%	0.0
D9-THCV	0.021%	0.00%	0.0
D8-THCV	0.014%	0.00%	0.0
CBN	0.061%	0.00%	0.0
D9-THC	0.052%	0.00%	0.0
D8-THC	0.019%	0.09%	0.9
CBC	0.062%	0.00%	0.0
D9-THCA	0.022%	0.00%	0.0
9R-HHC	0.031%	47.40%	474.0
9S-HHC	0.033%	49.78%	497.8



<b>Total CBD</b> 0.00%	<b>Total THC</b> 0.09%	<b>Total HHC</b> 97.19%	<b>Total Cannabinoids</b> 97.27%
---------------------------	---------------------------	----------------------------	-------------------------------------

\*This test does NOT comply with ISO 17025 Testing Facility

\*This test does NOT comply with ISO 17034 Requirements for Testing Standards

Requirements

Total THC = D9-THCA \* 0.877 + D9-THC + D8-THC

Total CBD = CBDA \* 0.877 + CBD

LOD = Limit of Detection

Total HHC = 9R-HHC + 9S-HHC

ND = Non-Detectable (Below Limit of Detection)

\*Values reported relate only to the product or substance tested. Colorado Chromatography Labs makes no claims as to the efficacy, safety or other risks associated with any detected or non-detected amounts of any substances reported herein. This Internal Certificate of Analysis shall not be reproduced except in full, without the written approval of Colorado Chromatography Labs.

**Chief Scientific Officer: Westley Cruces**